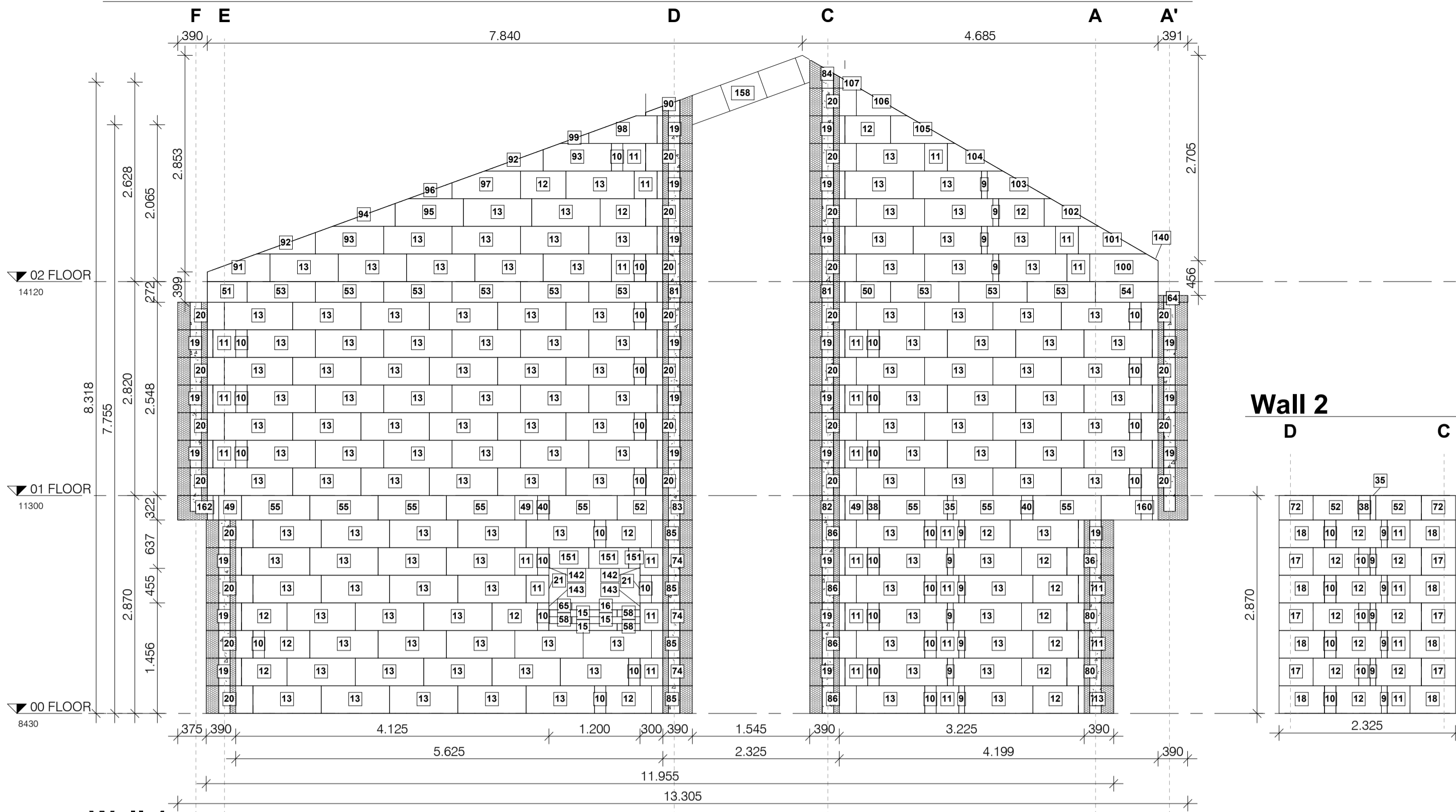
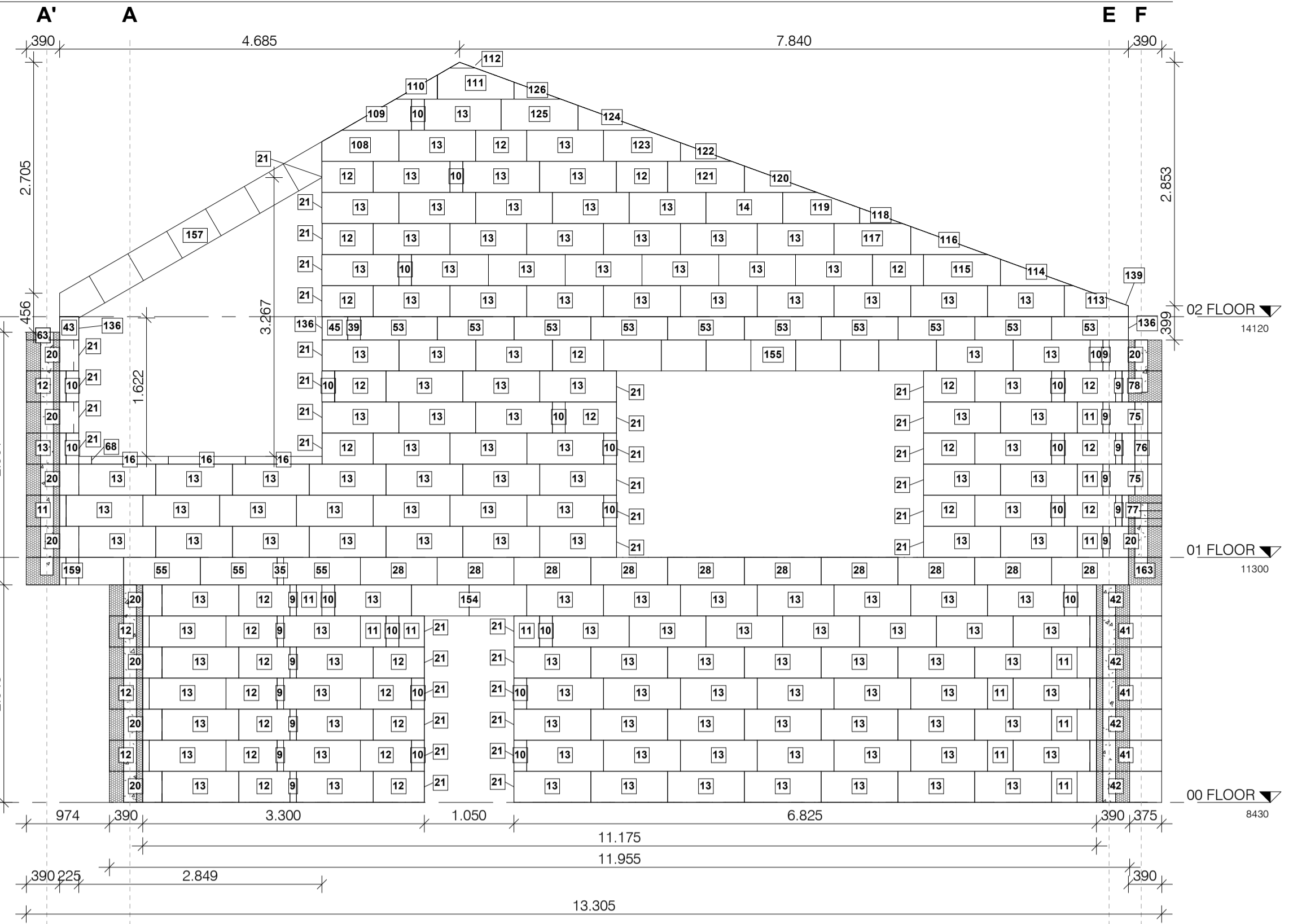


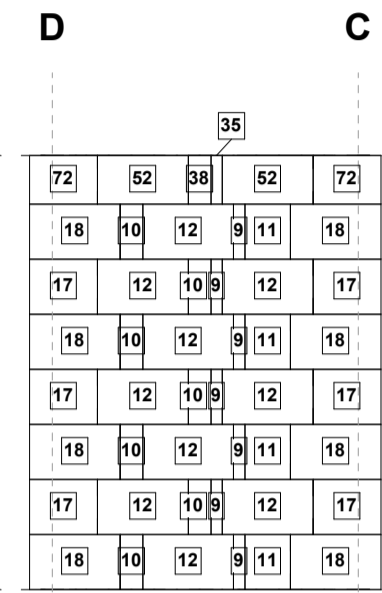
### Wall 1



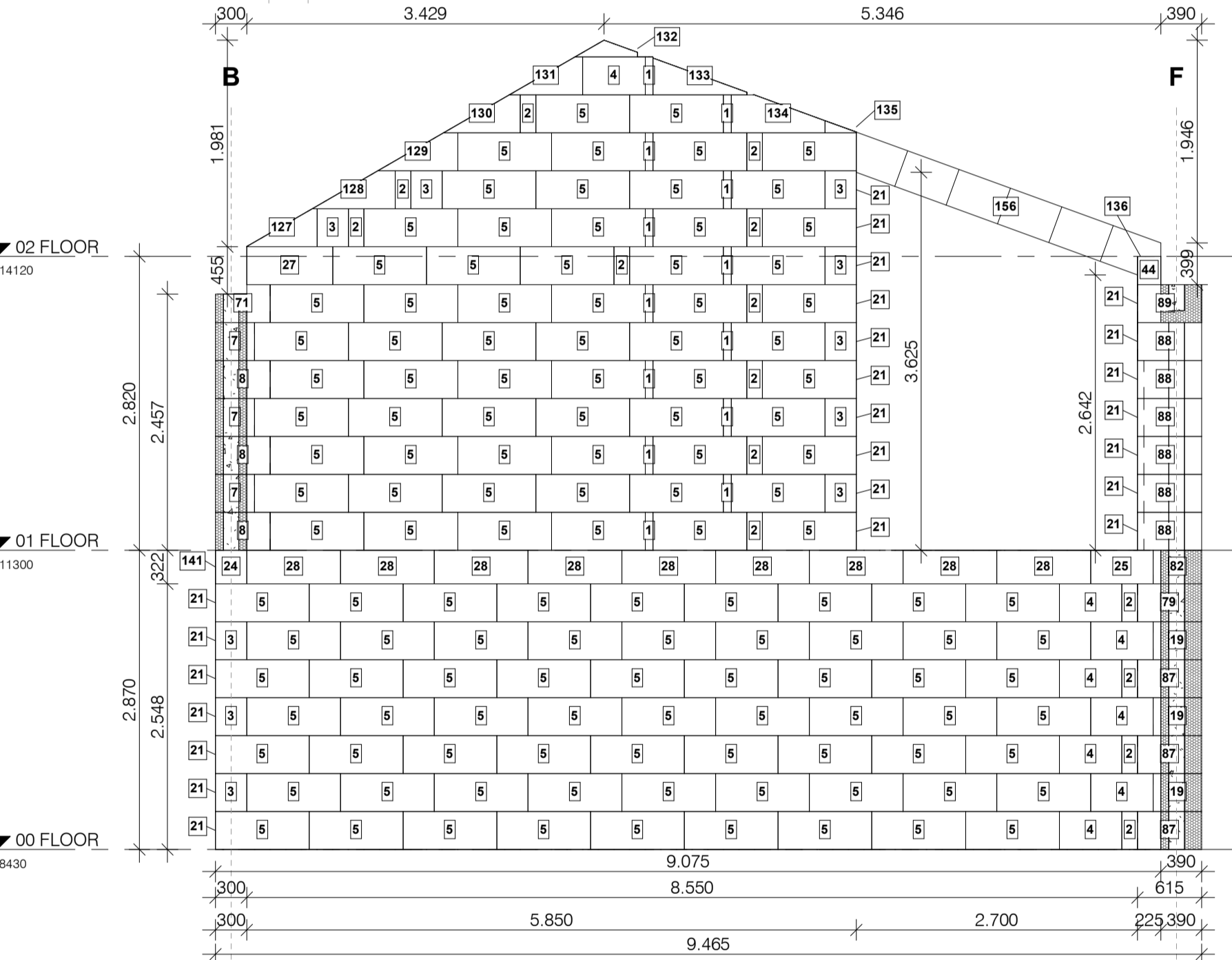
### Wall 3



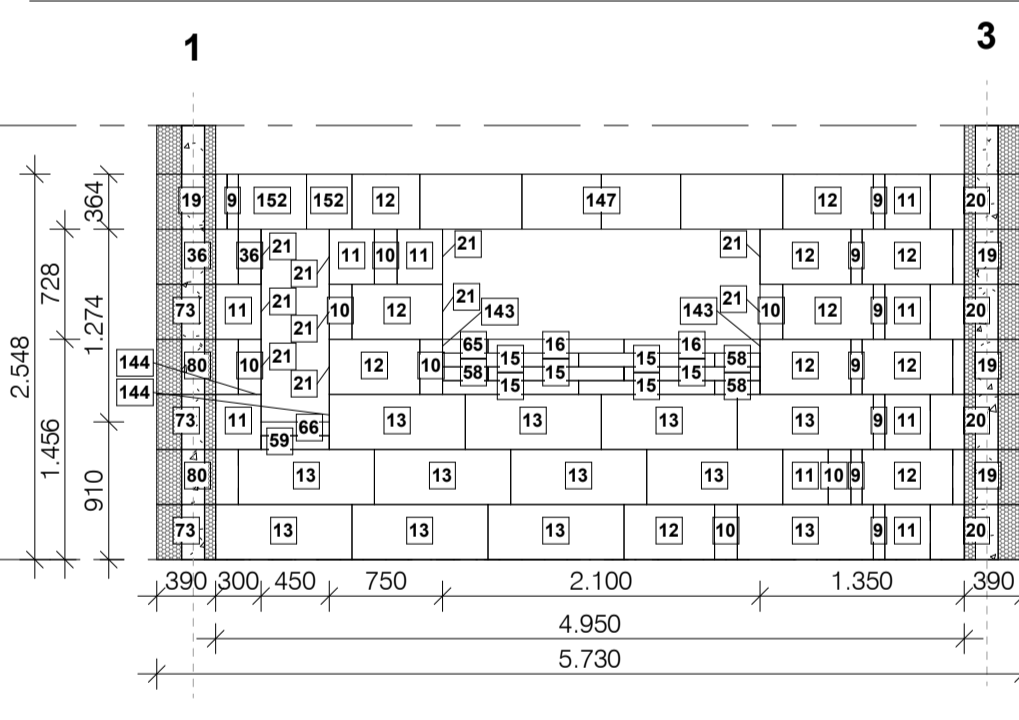
### Wall 2



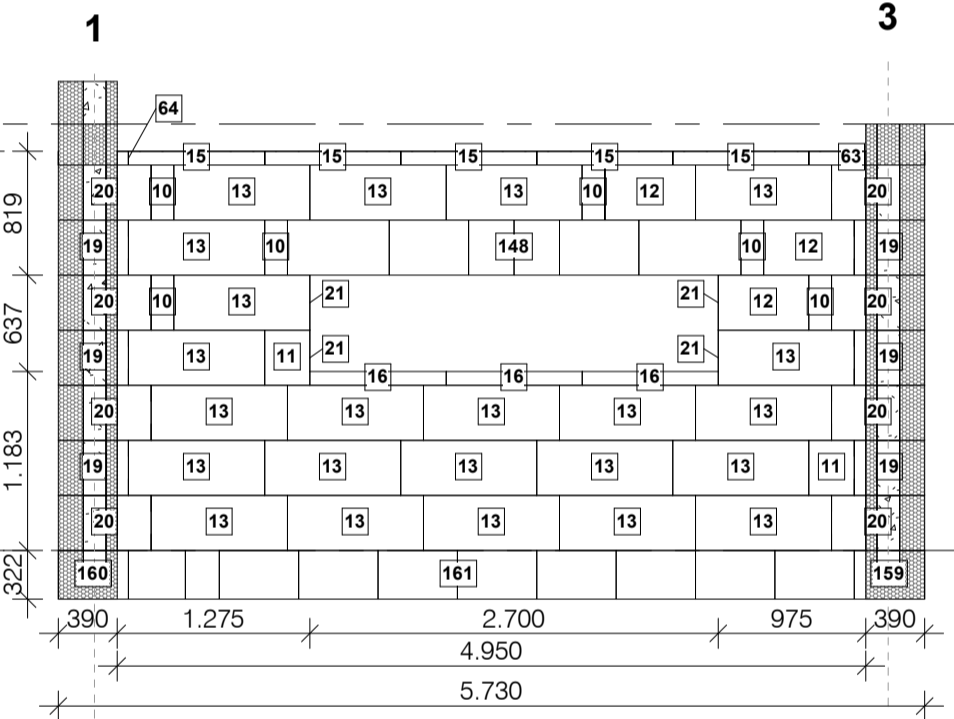
### Wall 4



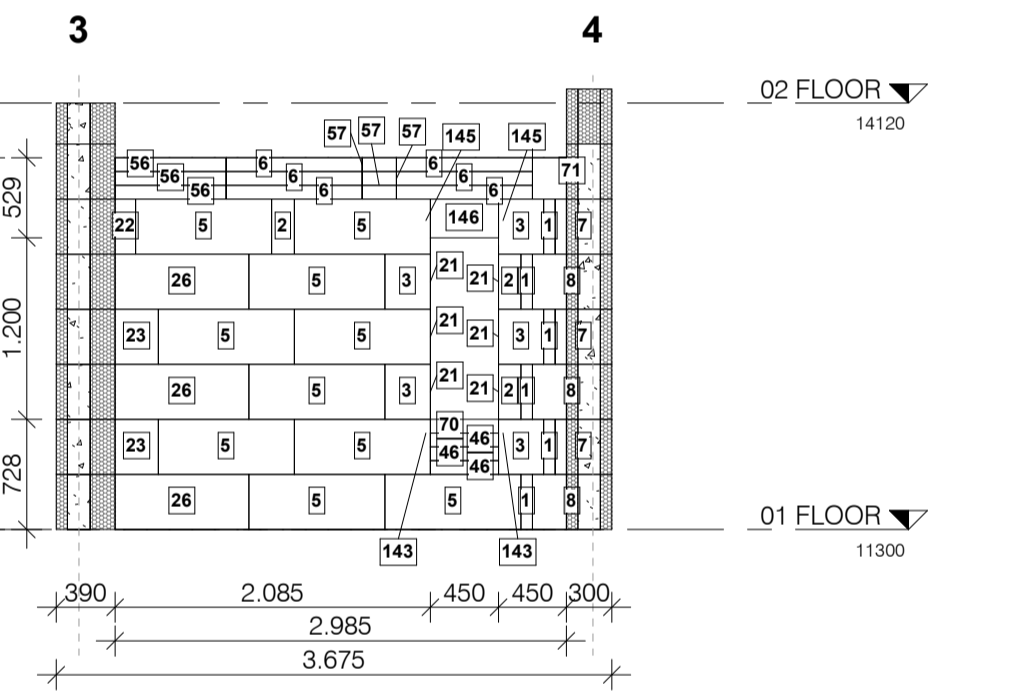
### Wall A



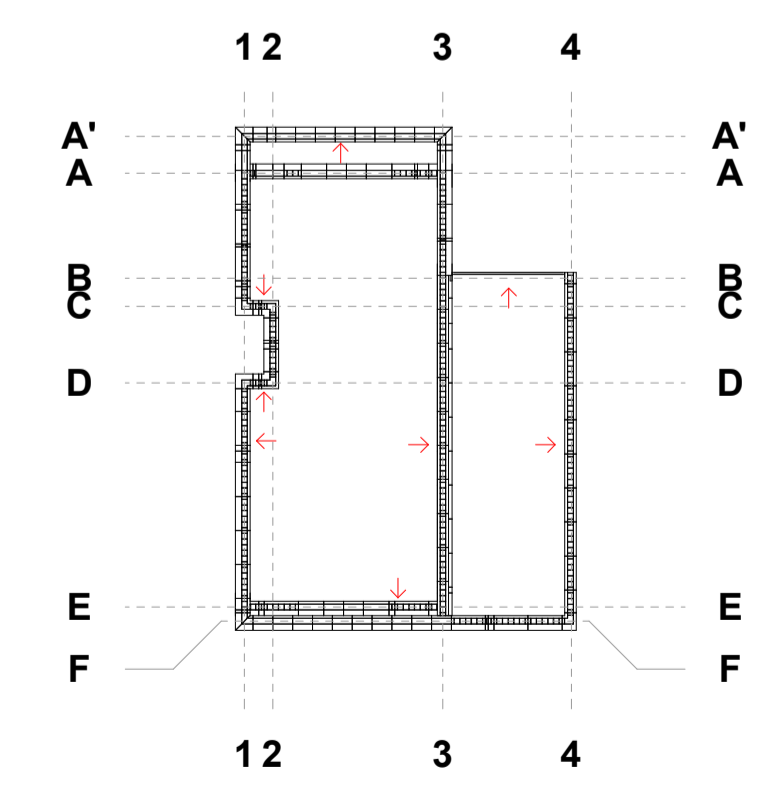
### Wall A'



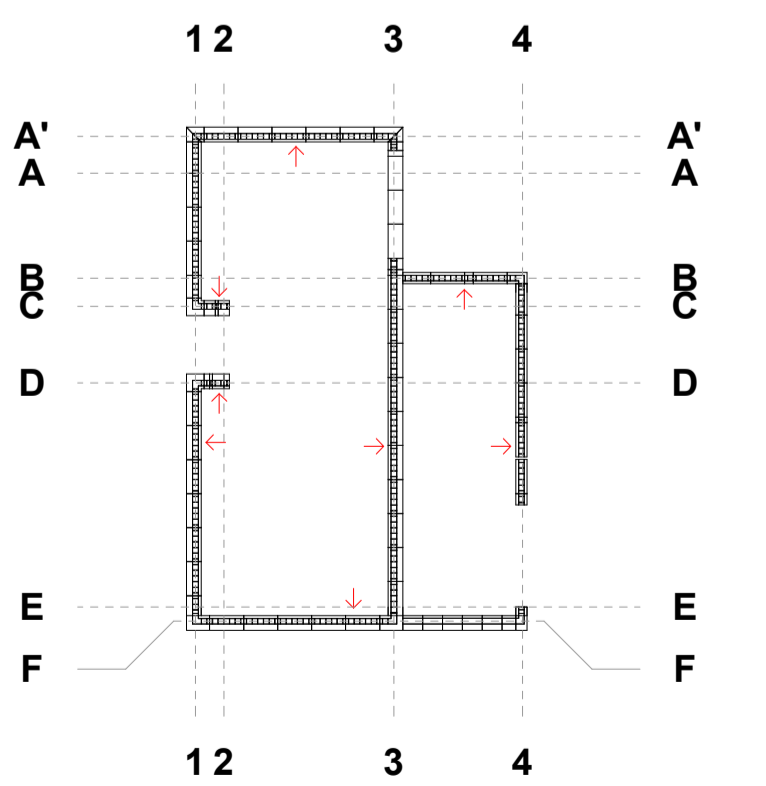
### Wall B



### 00 Floor plan



### 01 Floor plan



Position	Element mark	Pcs.
1	300-I-075	19
2	300-I-150	17
3	300-I-300	15
4	300-I-600	8
5	300-I-900	135
6	300-IR-900	6
7	300-L-375	3
8	300-L-525	3
9	390-I-075	73
10	390-I-150	115
11	390-I-300	98
12	390-I-600	73
13	390-I-900	353
14	390-IC-900	1
15	390-IR-900	22
16	390-IT-900	11
17	390-LN-450	6
18	390-LN-600	8
19	390-LZ-465	34
20	390-LZ-615	37
21	150-Z-060	140
22	300-I-150	1
23	300-I-300	2
24	300-I-300	1

Position	Element mark	Pcs.
25	300-I-600	1
26	300-I-900	3
27	150-Z-060	1
28	300-I-900	1
29	300-I-075	7
30	390-I-150	7
31	390-I-075	1
32	390-I-150	2
33	390-I-075	1
34	390-I-075	1
35	390-I-075	4
36	390-I-150	1
37	390-LZ-615	1
38	390-I-150	3
39	390-I-150	3
40	390-I-150	3
41	390-I-300	3
42	390-LZ-465	6
43	150-Z-060	1

Position	Element mark	Pcs.
43	390-I-300	1
44	150-Z-060	1
45	390-I-300	1
46	300-IR-900	3
47	390-I-300	1
48	390-I-300	2
49	390-I-300	3
50	390-I-600	1
51	150-Z-060	1
52	390-I-600	3
53	390-I-900	19
54	150-Z-060	1
55	390-I-900	14
56	300-IR-900	3
57	300-IR-900	3
58	390-IR-900	6
59	390-IR-900	1
60	390-IR-900	3
61	390-IR-900	1
62	390-LZ-615	8
63	390-IR-900	2

Position	Element mark	Pcs.
64	390-IR-900	2
65	390-IT-900	2
66	390-IT-900	1
67	390-IT-900	1
68	390-IT-900	2
69	390-IT-900	1
70	300-IT-900	1
71	300-L-525	1
72	390-LN-450	2
73	390-LZ-465	3
74	390-LZ-615	2
75	150-Z-060	3
76	390-LZ-615	2
77	150-Z-060	1
78	390-LZ-465	1
79	390-LZ-465	1
80	390-LZ-615	2
81	390-LZ-465	2
82	390-LZ-465	2
83	390-LZ-465	1
84	390-LZ-465	1

Position	Element mark	Pcs.
85	390-LZ-615	4
86	390-LZ-615	4
87	150-Z-060	3
88	390-LZ-615	3
89	390-LZ-615	1
90	390-LZ-615	1
91	150-Z-060	1
92	390-LZ-615	1
93	390-LZ-615	2
94	390-LZ-615	2
95	390-LZ-615	2
96	390-IC-900	1
97	390-IC-900	1
98	390-IC-900	1
99	390-IC-900	1
100	390-IC-900	1
101	390-IC-900	1
102	390-IC-900	1
103	390-IC-900	1
104	390-IC-900	1
105	390-IC-900	1

Position	Element mark	Pcs.
106	390-IC-900	1
107	390-IC-900	1
108	390-IC-900	1
109	390-IC-900	1
110	390-IC-900	1
111	390-IC-900	1
112	390-IC-900	1
113	390-IC-900	1
114	390-IC-900	1
115	390-IC-900	1
116	390-IC-900	1
117	390-IC-900	1
118	390-IC-900	1
119	390-IC-900	1
120	390-IC-900	1
121	390-IC-900	1
122	390-IC-900	1
123	390-IC-900	1
124	390-IC-900	1
125	390-IC-900	1
126	390-IC-900	1
127	300-IC-900	1
128	300-IC-900	1
129	300-IC-900	1

Position	Element mark	Pcs.
130	300-IC-900	1
131	300-IC-900	1
132	300-IC-900	1
133	300-IC-900	1
134	300-IC-900	1
135	300-IC-900	1
136	150-Z-060	6
137	150-Z-060	1
138	150-Z-060	1
139	150-Z-060	1
140	150-Z-060	1
141	150-Z-060	1
142	150-Z-060	2
143	150-Z-060	9
144	150-Z-060	2
145	150-Z-060	2
146	300-P-675	1
147	390-PD-675	4
148	390-PL-675	4
149	390-PD-675	1
150	390-PD-675	1

Position	Element mark	Pcs.
150	390-PL-675	1
151	390-PL-675	3
152	390-PD-675	1
153	390-PL-675	1
154	390-PD-675	3
155	390-PL-675	3
156	390-PD-675	1
157	390-PL-675	1
158	390-PD-675	1
159	390-PL-675	1
160	390-PL-675	4
161	390-PD-675	5
162	390-PL-675	3
163	390-PD-675	5
163	390-PL-675	5